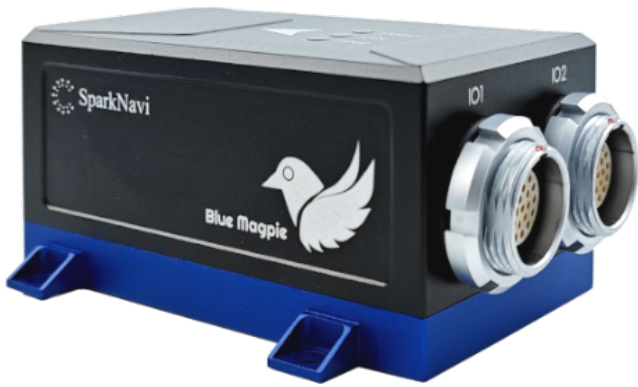
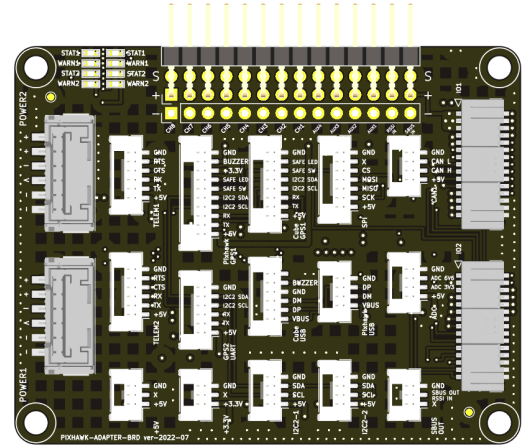
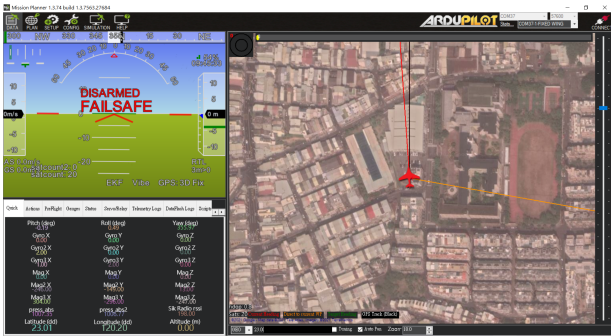


# SparkNavi Blue Magpie



## High Reliability Flight Control Computer

- Built-in High precision IMU
- Pixhawk Standard
- Ardupilot Compatible



## Specification

### Processor

- 32-bit ARM Cortex M7 core with FPU
- STM32H7 480 MHz / 2 MB Flash
- STM32F1 IOMCU
- TCXO

### Sensors

#### IMUs:

- ADIS16470AMLZ:
  - Gyroscope:
    - 8°/hr in run bias stability
    - 0.008°/sec/√Hz rms rate noise density
  - Accelerometer:
    - Triaxial, digital accelerometer
    - dynamic range: ±40 g
    - 13 μg in run bias stability
- ICM-42688-P 6-Axis MEMS IMU (GYRO Noise 2.8(mdps/rt-Hz))

### Barometer

- TDK MS5611 (resolution: 1.2 Pa)
- Bosch BMP388 (resolution: 1.2 Pa)

### Compass

- PNI RM3100 (resolution: 0.0013 uT) Microtesla
- Bosch BMM150 (resolution: 0.3 uT) Microtesla

### Pixhawk Adapter

- Maximum Voltage Input: +55V

### Flight Controller Power

- Maximum Voltage Input: +5.0V ~ +6.0V
- All peripheral outputs over-current protected, all inputs ESD protected

### Interfaces

- PWM 12 (PWM x 8, AUX x 4)
- Telemetry x 2
- CAN x 1
- USB x 1
- I2C x 1
- SPI x 1
- GPS x 2 (GPS x 1 + UART x 1)
- Futaba S.BUS input
- PPM sum signal
- RSSI Input
- 3.3V and 6.6V ADC inputs

### Dimensions

- Length: 74 mm
- Width: 56 mm
- Height: 35 mm

### Weight

- 138g

### Place of origin

- Design and Made in Taiwan

## KEY ADVANTAGES

- High Reliability
- Built-in High precision IMU
- Pixhawk Standard
- Ardupilot Compatible



Address : No. 41, Wenxian 1st Rd., North Dist., Tainan City 704, Taiwan (R.O.C.)  
TEL : +886-6-3586207  
Fax : +886-6-3581363  
Email : ethan@robotlab.com.tw  
http://www.robotlab.com.tw