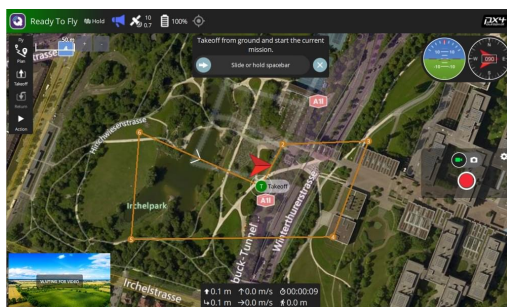
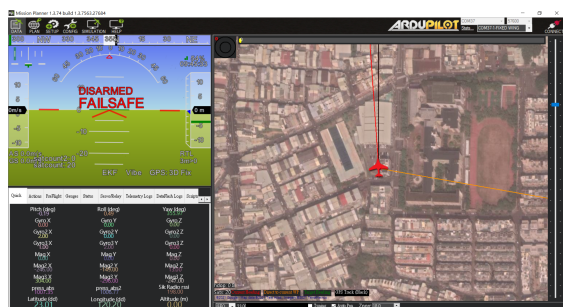
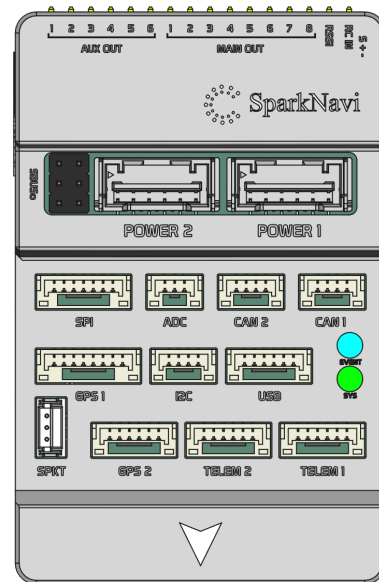


# SparkNavi Blue



- Pixhawk Standard V6X
- Ardupilot Compatible
- 6061 aluminum-magnesium alloy housing



## Specification

### Processor

- 32-bit ARM Cortex M7 core with FPU
- STM32H7 480 MHz / 2 MB Flash
- STM32F1 IOMCU
- TCXO

### Sensors

#### IMUs:

- ICM-42688-P 6-Axis MEMS IMU (GYRO Noise 2.8(mdps/rt-Hz))
- IIM-42652 6-Axis MEMS IMU (GYRO Noise 2.8(mdps/rt-Hz))

### Barometer

- SPL06-001 (resolution: 0.06 Pa)

### Compass

- QMC5883L

## Pixhawk Standard V6X

### Flight Controller Power

- Maximum Voltage Input: +5.0V ~ +6.0V
- All peripheral outputs over-current protected, all inputs ESD protected

### Interfaces

- PWM 14 (PWM x 8, AUX x 6)
- Telemetry x 2
- CAN x 2
- USB x 1
- I2C x 1
- SPI x 1
- GPS x 2 (GPS x 1 + UART x 1)
- Futaba S.BUS input
- PPM sum signal
- RSSI Input
- 3.3V and 6.6V ADC inputs

### Dimensions

- Length: 73.8 mm
- Width: 47.5 mm
- Height: 16.95 mm

### Weight

- 70g

### Place of origin

- Design and Made in Taiwan

## KEY ADVANTAGES

- Pixhawk Standard V6X
- Ardupilot Compatible
- 6061 aluminum-magnesium alloy housing



Address : No. 41, Wenxian 1st Rd., North Dist., Tainan City 704, Taiwan (R.O.C.)  
 TEL : +886-6-3586207  
 Fax : +886-6-3581363  
 Email : ethan@robotlab.com.tw  
 http://www.robotlab.com.tw